

# IX-NNW80

IX Large SCARA Robot Dustproof/splash-proof type:  
Arm Length 800mm, Vertical (Z) Axis 200mm (400mm)



Type Dustproof/splash-proof type    Arm length 800mm    Load capacity 5kg rated/20kg maximum

Model items Series Model Cable length Controller type Standard I/O Expansion I/O I/O cable length Power-supply voltage  
(Example) IX-NNW8020-5L-KX-N-EEE-2-2

\* Refer to P.10 for details on the model items.

\* The above model code represents a combination of robot and controller.

## Model/Specifications

Model	Axis configuration	Arm length (mm)	Motor capacity (W)	Work envelope	Positioning repeatability (mm) (Note 1)	Maximum operating speed (Note 2)	Standard cycle time (sec) (Note 3)	Load capacity (kg)		Axis 3 push force (N)		Axis 4 allowable load	
								Rated	Maximum	Push action (Note 4)	Maximum thrust (Note 4)	Allowable inertial moment (kg·m <sup>2</sup> ) (Note 5)	Allowable torque (N·m)
IX-NNW8020-5L-KX-□-□-□-2 [IX-NNW8040-5L-KX-□-□-□-2]	Axis 1 Arm 1	450	750	±125°	±0.015 (XY)	7121mm/s (Composite speed)	0.52	5	20	188	265	0.1	6.7
	Axis 2 Arm 2	350	400	±145°									
	Axis 3 Vertical axis	—	400	200mm [400mm]	±0.010	1583mm/s							
	Axis 4 Rotating axis	—	200	±360°	±0.005	1200°/s							

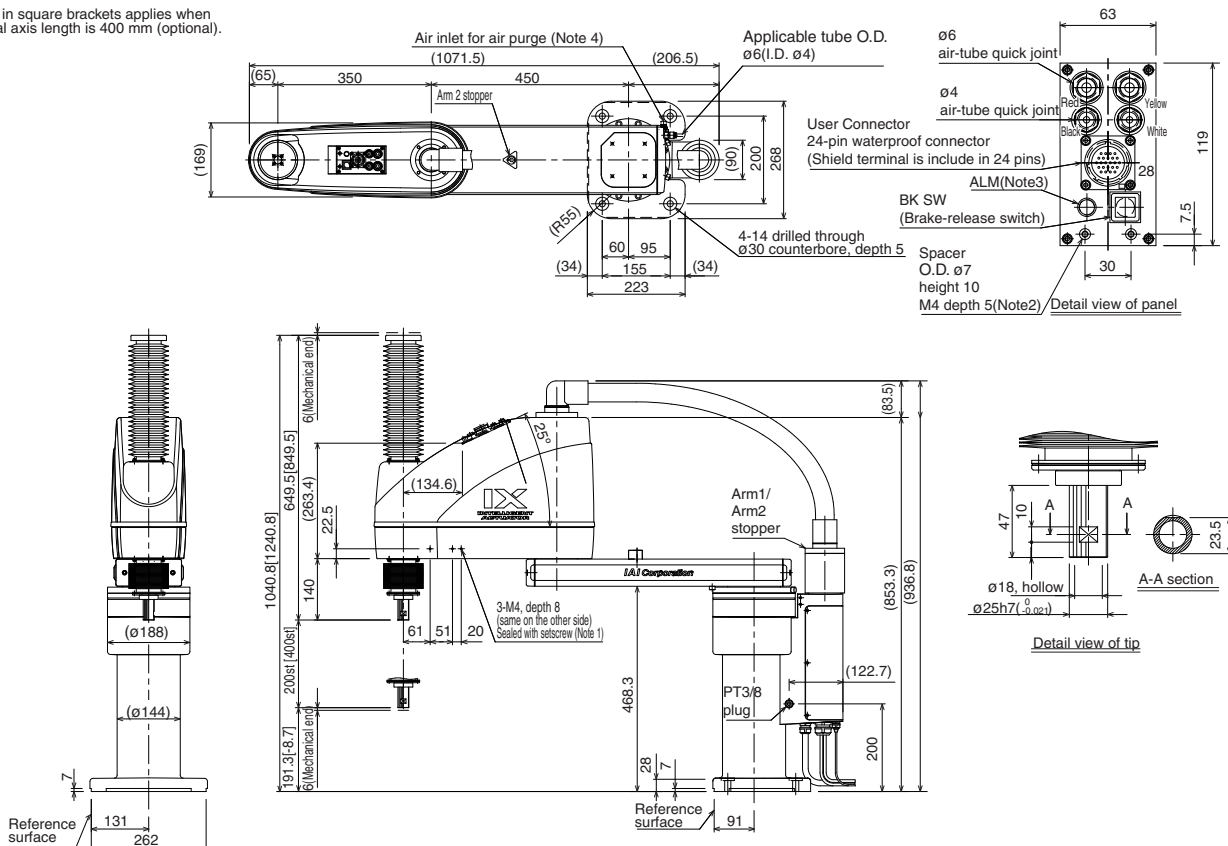
\* In the above model code, specify the desired controller in □. For details, refer to "Explanation of SCARA Robot Model Items" (P. 10).

## Common Specifications

Encode type	Absolute	Ambient temperature/humidity	Temperature: 0-40°C, humidity: 20-85%RH or below (non-condensing)
User wiring	23-conductor AWG26 waterproof connector with shield	Robot weight	62kg
User tubing	Air tube (O.D. ø6, I.D. ø4) x 2 (Normal working pressure 0.8MPa) Air tube (O.D. ø4, I.D. ø2.5) x 2 (Normal working pressure 0.8MPa)	Cable length (Note 8)	5L: 5m (standard), 10L: 10m (optional)
Alarm indicator (Note 6)	Red, small LED indicator x 1 (24 VDC must be supplied.)	Protection grade (Note 9)	IP65 or equivalent
Brake-release switch (Note 7)	Brake-release switch to prevent the vertical axis from dropping (24 VDC must be supplied.)	Air purge pressure (Note 10)	0.3MPa or above (0.6MPa maximum) (Clean, dry air)

## Dimensions

\* The value in square brackets applies when the vertical axis length is 400 mm (optional).



- Note 1: The prepared hole 3-M4, depth 8 connects to the other side of the arm.
- Note 2: The external force applied to each spacer must not exceed 30 N in the axial direction or 2 N·m in the rotating direction.
- Note 3: To use the LED, the user must provide a circuit that takes signals from the controller's I/O output and supplies 24 VDC to the applicable LED terminal in the user connector.
- Note 4: The air inlet can be installed in the reverse direction (by disconnecting the PT3/8 plug and swapping it with the joint).

## Applicable Controller Specifications

Applicable controller	Features	Maximum I/O points (inputs/outputs)	Serial communication unit	Power-supply voltage	Page
XSEL-KX	General-purpose type offering excellent expandability	Up to 192 points	Can be installed.	AC200V	P37



Refer to P. 6 for the explanations of (Note 1) to (Note 10).